

# MONTHLY MEMBERSHIP PROGRESS REPORT

LOCATION OHIO

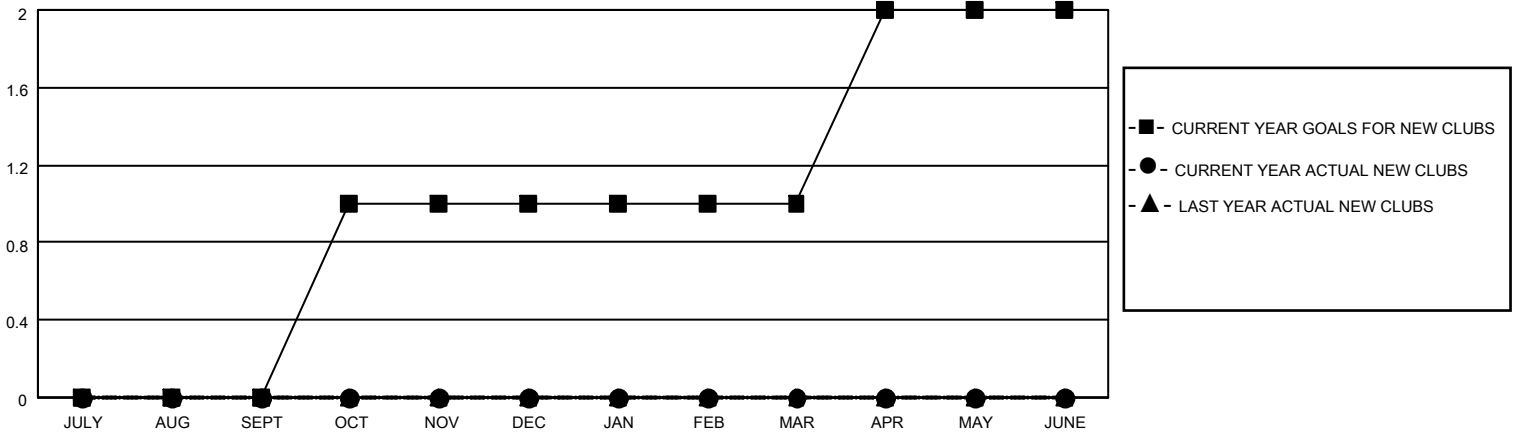
District 13 OH3

Results as of: 10/31/2022

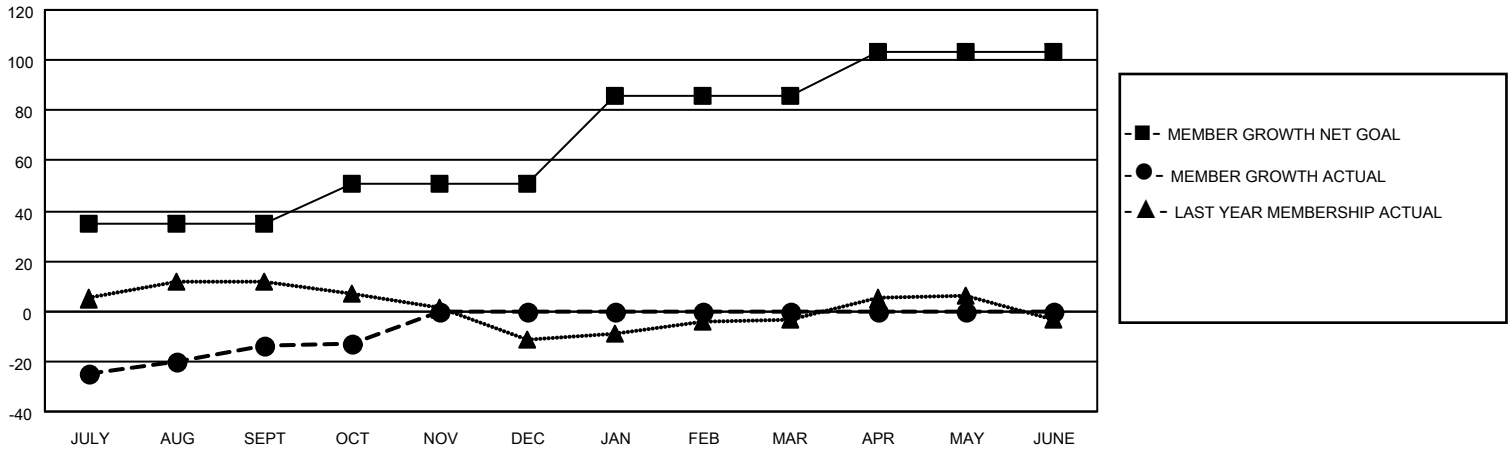
Clubs			
RESULTS FOR 2022-2023			
QUARTER	NEW CLUB GOAL	NEW CLUBS	DROPPED CLUBS
JULY/AUG/SEPT	0	0	1
OCT/NOV/DEC	1	0	0
JAN/FEB/MAR	0	0	0
APR/MAY/JUNE	1	0	0

Members			
RESULTS FOR 2022-2023			
QUARTER	MEMBER GROWTH NET GOAL	MEMBER GROWTH ACTUAL	DROPPED MEMBERS ACTUAL (including transfers)
JULY/AUG/SEPT	35	30	43
OCT/NOV/DEC	16	9	7
JAN/FEB/MAR	35	0	0
APR/MAY/JUNE	17	0	0

**GOALS AND ACTUAL NEW CLUBS CUMULATIVE**



**GOALS AND ACTUAL MEMBERS CUMULATIVE**



**DROPPED CLUBS: 1**

**17 CLUBS OF 53 ADDED 1 OR MORE NEW MEMBERS**

**GENDER DISTRIBUTION**

MALE	917 (67.08%)
FEMALE	449 (32.85%)
NON BINARY	0 (0.00%)
PREFER NOT TO ANSWER	1 (0.07%)

**DROPPED MEMBERS**

DECEASED	7
CLUB CANCELLED	0
OTHER	44
<b>TOTAL</b>	<b>51</b>

[CLICK HERE FOR CUMULATIVE MEMBERSHIP DATA](#)

TOTAL FAMILY UNIT MEMBERS	288
FAMILY MEMBERS PAYING HALF DUES	148